

# REPORT TO CABINET

**REPORT OF:** Head of Finance

**REPORT NO:** HOF175

**DATE:** 5<sup>TH</sup> December 2011

|   |   |                                      |
|---|---|--------------------------------------|
| <b>TITLE:</b>                                     | <b>COUNCIL TAX BASE 2012/13</b>   |                                      |
| <b>KEY DECISION OR POLICY FRAMEWORK PROPOSAL:</b> | Key Decision  |                                      |
| <b>PORTFOLIO HOLDER: NAME AND DESIGNATION:</b>    | Councillor Mike Taylor<br>Resources and Assets Portfolio Holder   |                                      |
| <b>CONTACT OFFICER:</b>                           | Richard Wyles Head of Finance<br>01476 406210<br><a href="mailto:r.wyles@southkesteven.gov.uk">r.wyles@southkesteven.gov.uk</a>   |                                      |
| <b>INITIAL IMPACT ASSESSMENT:</b>                 | Carried out and Referred to in paragraph (7) below:   | Full impact assessment Required: N/A |
| <b>Equality and Diversity</b>                     |   |                                      |
| <b>FREEDOM OF INFORMATION ACT:</b>                | This report is publicly available via the Your Council and Democracy link on the Council's website:<br><a href="http://www.southkesteven.gov.uk">www.southkesteven.gov.uk</a> |                                      |
| <b>BACKGROUND PAPERS</b>                          |   |                                      |

## 1. RECOMMENDATION

Cabinet is recommended to approve the recording of the amounts shown below as the council tax bases for 2012/13, in accordance with the Local Authorities (Calculation of Council Tax Base) Regulations 1992 (as amended).

| <u>Parish</u>       | <u>Band D Equivalents</u> |
|---------------------|---------------------------|
|                     | No.                       |
| Grantham            | 11274.8                   |
| Stamford            | 7131.8                    |
| Bourne              | 5005.5                    |
| Allington           | 359.0                     |
| Ancaster            | 582.4                     |
| Aslackby & Laughton | 113.7                     |
| Barholm & Stow      | 34.2                      |
| Barkston & Syston   | 263.6                     |

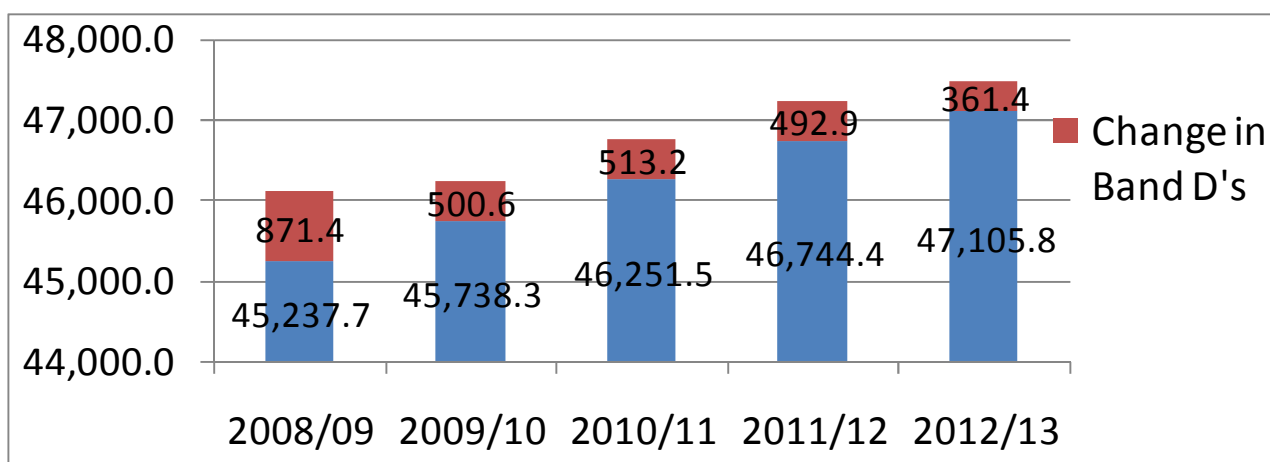
|   |        |
|---|--------|
| Barrowby                                  | 726.3  |
| Baston                                    | 543.4  |
| Belton & Manthorpe                        | 205.0  |
| Billingborough                            | 485.1  |
| Bitchfield & Bassingthorpe                | 58.1   |
| Boothby Pagnell                           | 64.2   |
| Braceborough & Wilsthorpe                 | 135.9  |
| Ropsley, Humby, Braceby & Sapperton       | 341.3  |
| Burton Coggles                            | 38.8   |
| Careby, Aunby & Holywell                  | 68.6   |
| Carlby                                    | 212.6  |
| Carlton Scroop & Normanton                | 129.1  |
| Castle Bytham                             | 301.7  |
| Caythorpe                                 | 539.8  |
| Claypole                                  | 505.7  |
| Colsterworth, Gunby & Stainby & N. Witham | 737.9  |
| Corby Glen                                | 399.7  |
| Counthorpe & Creeton                      | 34.3   |
| Deeping St James                          | 2464.9 |
| Denton                                    | 121.4  |
| Dowsby                                    | 62.4   |
| Dunsby                                    | 46.4   |
| Stoke Rochford & Easton                   | 86.6   |
| Edenham                                   | 113.0  |
| Fenton                                    | 56.0   |
| Folkingham                                | 299.4  |
| Foston                                    | 218.1  |
| Fulbeck                                   | 220.4  |
| Greatford                                 | 126.1  |
| Great Gonerby                             | 809.3  |
| Great Ponton                              | 130.1  |
| Haconby                                   | 194.3  |
| Harlaxton                                 | 338.1  |
| Heydour                                   | 155.5  |
| Honington                                 | 71.6   |
| Horbling                                  | 167.1  |
| Hougham                                   | 79.5   |
| Hough on the Hill                         | 167.3  |
| Ingoldsby                                 | 115.8  |
| Irnham                                    | 103.7  |
| Kirkby Underwood                          | 84.1   |
| Langtoft                                  | 752.8  |
| Lenton, Keisby & Osgodby                  | 66.8   |
| Little Bytham                             | 112.1  |
| Little Ponton & Stroxton                  | 70.9   |

|                                 |        |
|---------------------------------|--------|
| Londonthorpe & Harrowby Without | 1743.3 |
| Long Bennington                 | 899.3  |
| Market Deeping                  | 2058.5 |
| Marston                         | 151.1  |
| Morton                          | 831.1  |
| Old Somerby                     | 92.3   |
| Pickworth                       | 76.3   |
| Pointon & Sempringham           | 199.7  |
| Rippingale                      | 346.8  |
| Sedgebrook                      | 144.9  |
| Skillington                     | 137.5  |
| South Witham                    | 489.5  |
| Stubton                         | 75.2   |
| Swayfield                       | 146.7  |
| Swinstead                       | 89.9   |
| Tallington                      | 200.8  |
| Thurlby                         | 816.9  |
| Toft, Lound & Manthorpe         | 137.9  |
| Uffington                       | 316.4  |
| Welby                           | 77.5   |
| Westborough & Dry Doddington    | 152.4  |
| West Deeping                    | 125.0  |
| Witham on the Hill              | 99.9   |
| Woolsthorpe                     | 152.0  |
| Wyville cum Hungerton           | 18.9   |

## 2. PURPOSE OF THE REPORT/DECISION REQUIRED

The requirements of the Local Government Finance Act 1992 amended by s84 of the Local Government Act 2003 allow each local authority to make its own arrangements for adopting the Council Tax base. The total dwellings on the Valuation List (59,887), after allowance for discounts and exemptions, convert by the formula to 47,105.8 Band D equivalents for 2012/13. This is an increase of 0.77% compared to 2011/12 (46,744.4 band D equivalents) which is 0.23% less than the assumption of 1% growth as identified in the Medium Term Financial Plan. Over the past few years there has been a trend of reduced growth levels as demonstrated in the graph below. The band D growth in 2008/09 was 1.97% which when compared to the 0.77% shows a 1.2% reduction and reflects the tough economical climate over recent years.

Given the reductions in Band D growth it is therefore important the Council has a high collection rate to ensure it maximises the potential income from Council tax. This is something the Council has strived to achieve and in recent years the collection rates have been consistently above 98%. In 2010/11 the Council's collection rate was 98.3% against the national average of 97.3% which demonstrates the high performance levels being achieved.



### 3. DETAILS OF REPORT

The council tax base is used to calculate how much each property will be charged to cover the net costs of the district council and the precepting authorities. The total net expenditure is divided by the council tax base to give the amount paid by individual households. The council tax base is calculated in line with Government regulations.

Council tax requires that all domestic properties are placed in one of eight valuation bands (Bands A-H). The Government has determined the council tax level for each property is assessed as a proportion of tax rate for a band D property.

The specific number of dwellings under each of the banding is given below:

|                                     | Band A entitled to disabled relief reduction | Band A    | Band B    | Band C   | Band D   | Band E   | Band F   | Band G   | Band H | Total           |
|-------------------------------------|--|-----------|-----------|----------|----------|----------|----------|----------|--------|-----------------|
| Total (rounded)*                    | 26.25  | 15,146.50 | 11,862.75 | 9,558.25 | 7,974.50 | 4,861.00 | 2,459.25 | 973.00   | 62.00  | 59,924          |
| Ratio to band D                     | 5/9  | 6/9       | 7/9       | 8/9      | 9/9      | 11/9     | 13/9     | 15/9     | 18/9   |                 |
| Number of Band D equivalent         | 14.60  | 10,097.70 | 9,226.60  | 8,496.20 | 7,974.50 | 5,941.20 | 3,552.30 | 1,621.70 | 124    | 47,048.8        |
| Crown Properties                    |  |           |           |          |          |          |          |          |        | 57              |
| Tax Base for Formula Grant purposes |  |           |           |          |          |          |          |          |        | <b>47,105.8</b> |
| Anticipated collection rate         |  |           |           |          |          |          |          |          |        | <b>98.50%</b>   |
| Band D Equivalent collectable       |  |           |           |          |          |          |          |          |        |                 |

(\*the total figures quoted are calculated after the deduction of the required discounts and exemptions)

**4. OTHER OPTIONS CONSIDERED**

None Applicable

**5. RESOURCE IMPLICATIONS**

None Applicable

**6. RISK AND MITIGATION (INCLUDING HEALTH AND SAFETY AND DATA QUALITY)**

None Applicable

**7. COMMENTS OF FINANCIAL SERVICES**

My comments are included in the report.

**8. COMMENTS OF LEGAL AND DEMOCRATIC SERVICES**

The Cabinet's approval of the council tax base detailed in this report is required in accordance with the legislation referred to.

**9. COMMENTS OF OTHER RELEVANT SERVICE MANAGER**

None Applicable

**10. APPENDIX**

None